




FRANCIS HARRIS LN TRACT

APPROX. 137 AC.

EDWARDS AQUIFER ZONE EXHIBIT

MARCH 2022

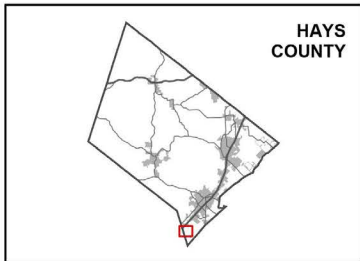
LEGEND

-  DISCOVERY TRACT
-  EDWARDS AQUIFER TRANSITION ZONE
-  COUNTY LINE

DATA SOURCE: EDWARDS AQUIFER ZONES - TEXAS
COMMISSION ON ENVIRONMENTAL QUALITY (TCEQ)

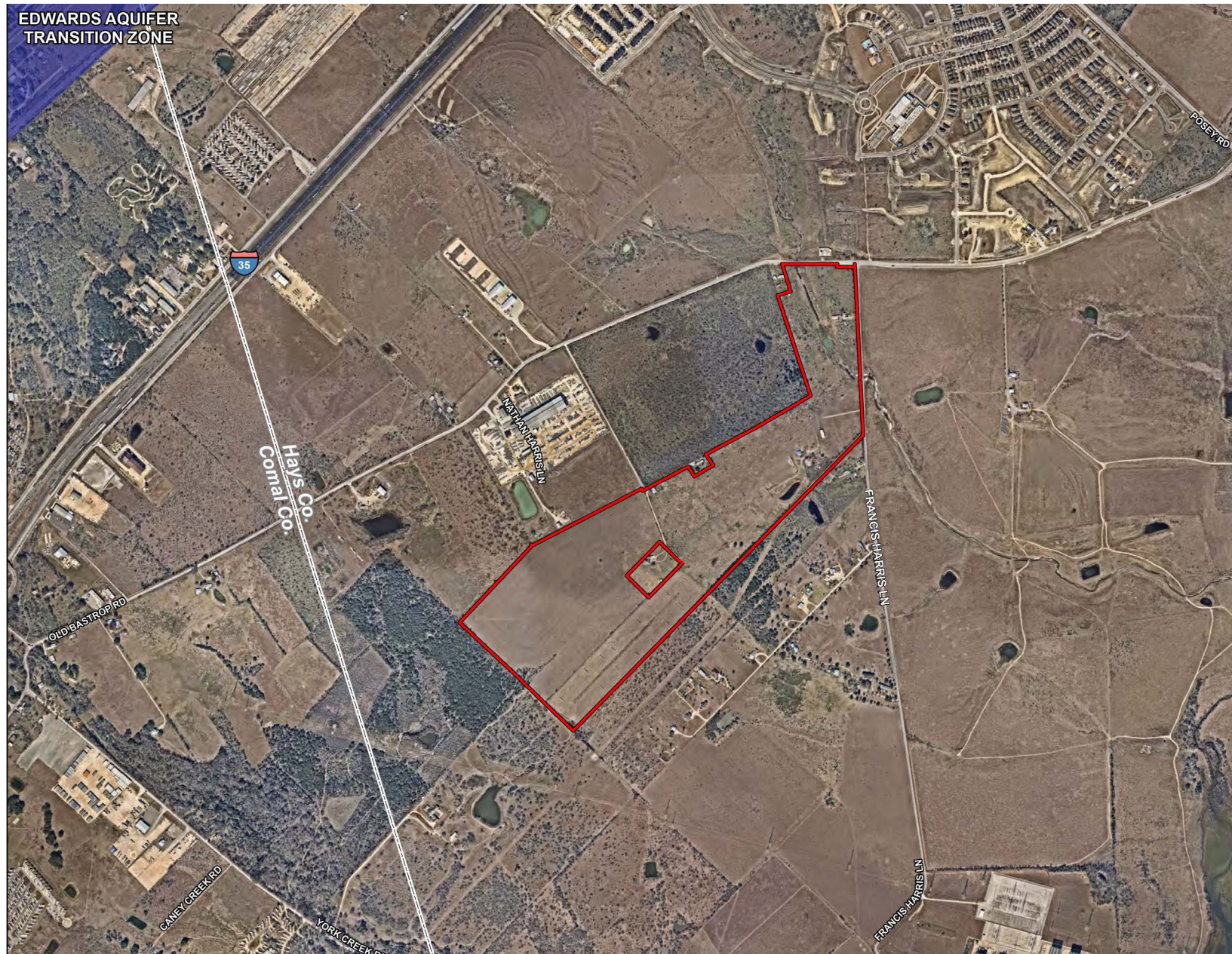


0 500 1,000 2,000
FEET



AERIAL PHOTOGRAPH DATE: NEARMAP 2021

THIS PRODUCT IS FOR INFORMATIONAL PURPOSES AND MAY NOT HAVE BEEN PREPARED FOR OR BE SUITABLE FOR LEGAL, ENGINEERING, OR SURVEYING PURPOSES. IT DOES NOT REPRESENT AN ON-THE-GROUND SURVEY AND REPRESENTS ONLY THE APPROXIMATE RELATIVE LOCATION OF PROPERTY BOUNDARIES.



Contact For More Information:

Clarke Nolley | (512) 919-6764 | clarke@rclb.com

Garrett Yarbrough | (512) 924-9236 | garrett@rclb.com



**REPUBLIC
COMMERCIAL**
LAND & BROKERAGE