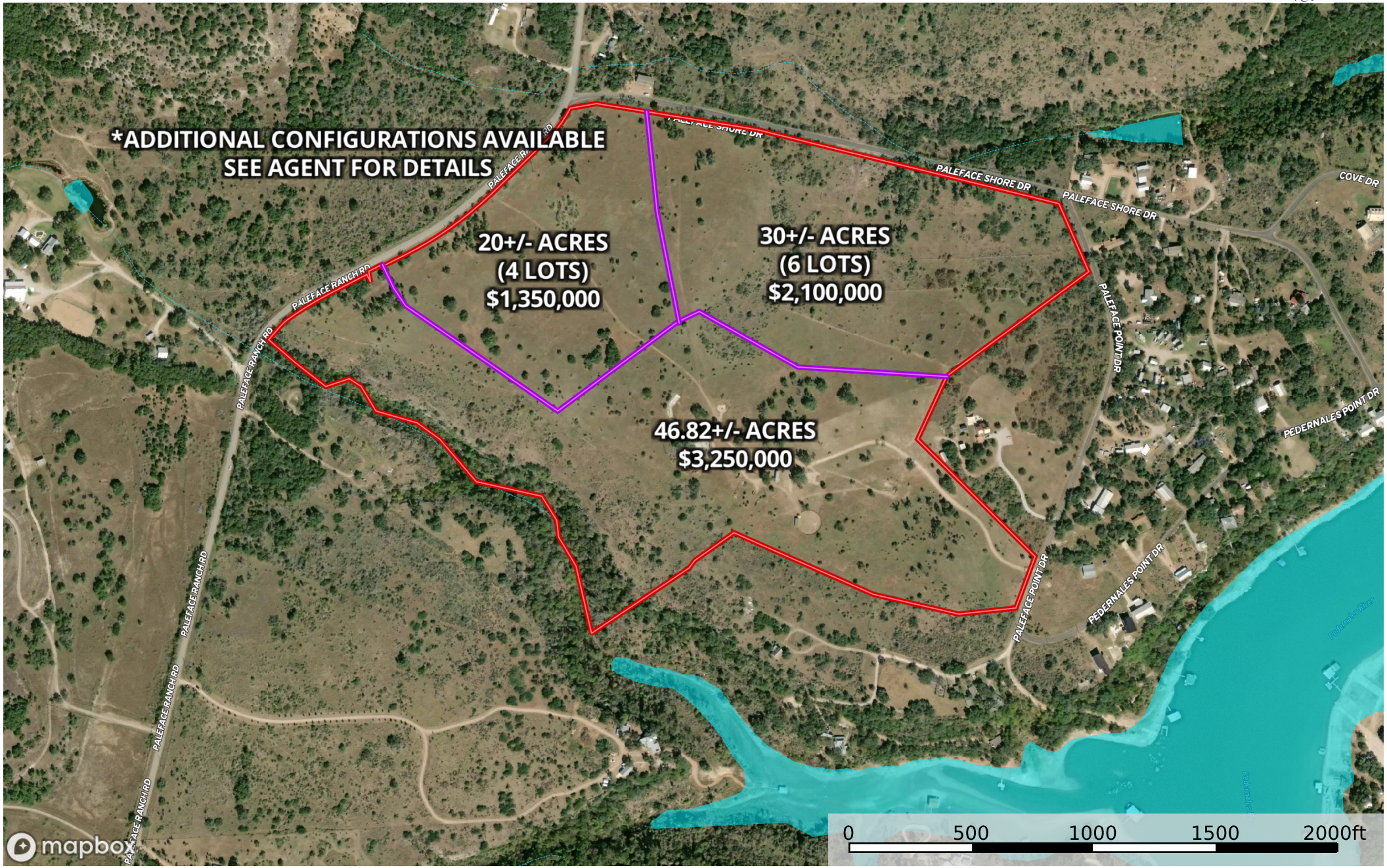


# Spicewood Point - Property Boundary Map

Travis County, Texas, 97.15 AC +/-



**\*ADDITIONAL CONFIGURATIONS AVAILABLE  
SEE AGENT FOR DETAILS**

**20+/- ACRES  
(4 LOTS)  
\$1,350,000**

**30+/- ACRES  
(6 LOTS)  
\$2,100,000**

**46.82+/- ACRES  
\$3,250,000**

- Purchase Options
- Property Boundary
- Stream, Intermittent
- River/Creek
- Water Body